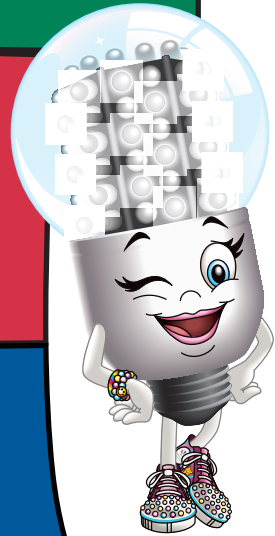


LED Lucy's Coin-flip Game

Touchstone Energy® Cooperatives work hard to provide dependable electricity to your home, but you can do your part as well! Play the LED Lucy™ Coin-Flip game and guide the electricity to your house. Remember to save energy and watch out for hazardous materials!

START



HOW TO PLAY: Flip a coin!

Heads: Move forward 1 space.

Tails: Move forward 2 spaces.



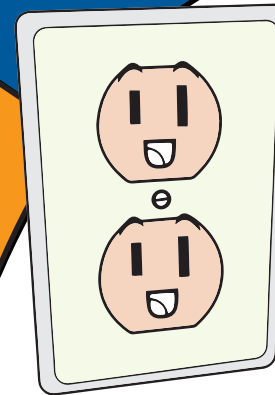
LED LUCY™

Leave light switches on after leaving room.

Move back one space.

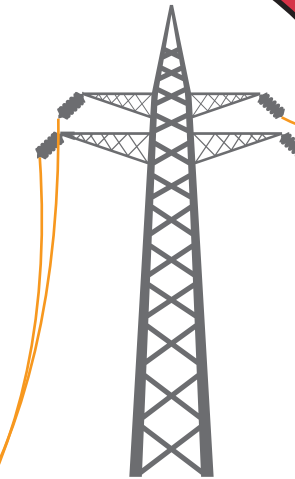
Use LED light bulbs.

Move up one space.



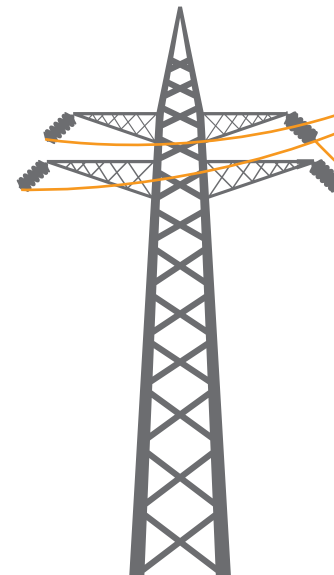
Unplug unused appliances.

Move up one space.



Lineman fixes utility lines after storm.

Move up two spaces.



You made it!

Storm knocks power out.

Move back two spaces.

